

## Mezzanine Inspection Report (Scoping)

<b>Date:</b> 12/15/14	<b>Station Name:</b> D10 - Deanwood	<b>Mezzanine #:</b> 065	<b>Completed By:</b> Mike Butler
-----------------------	-------------------------------------	-------------------------	----------------------------------

### Summary

All video scoping and pull string installation was completed successfully at this mezzanine. The following work was completed:

- Video scoping and pull string installation completed for comm. duct in upper faregate array.
- Video scoping and pull string installation completed for comm. duct in lower faregate array.
- Video scoping completed for power duct in upper faregate array.
- Video scoping completed for power duct in lower faregate array.
- Pull string installation completed in power conduit between Kiosk and AFC Panel.

### Scoping of Faregate Array(s)

Task	Yes/No	Notes
<b>Communications Duct – Upper Faregate Array (4 gates)</b>		
Was video scoping completed for the entire duct run?	Yes	Refer to "WMATA Deanwood 6inch Upper Comm Video.avi"
Were pull strings installed at all faregates in the array?	Yes	
Were there any obstructions or blockages? Provide details of type and specific location.	No	
Is the duct at capacity? Provide additional details about the dimensions of ducts and number of wires.	No	6" walker duct with less than 12 wires.
<b>Communications Duct - Lower Faregate Array (3 gates)</b>		
Was video scoping completed for the entire duct run?	Yes	Refer to "WMATA Deanwood 6inch Lower Comm Video.avi"
Were pull strings installed at all faregates in the array?	Yes	
Were there any obstructions or blockages? Provide details of type and specific location.	No	
Is the duct at capacity? Provide additional details about the dimensions of ducts and number of wires.	No	6" walker duct with less than 12 wires.
<b>Power Duct - Upper Faregate Array (4 gates)</b>		
Was video scoping completed for the entire duct run?	Yes	Refer to "WMATA Deanwood 6inch Upper Power Video.avi"
Were there any obstructions or blockages? Provide details of type and specific location.	No	
Is the duct at capacity? Provide additional details about the dimensions of ducts and number of wires.	No	6" walker duct with less than 15 wires.
<b>Power Duct - Lower Faregate Array (3 gates)</b>		
Was video scoping completed for the entire duct run?	Yes	Refer to "WMATA Deanwood 6inch Lower Power Video.avi"
Were there any obstructions or blockages? Provide details of type and specific location.	No	
Is the duct at capacity? Provide additional details about the dimensions of ducts and number of wires.	No	6" walker duct with less than 15 wires.


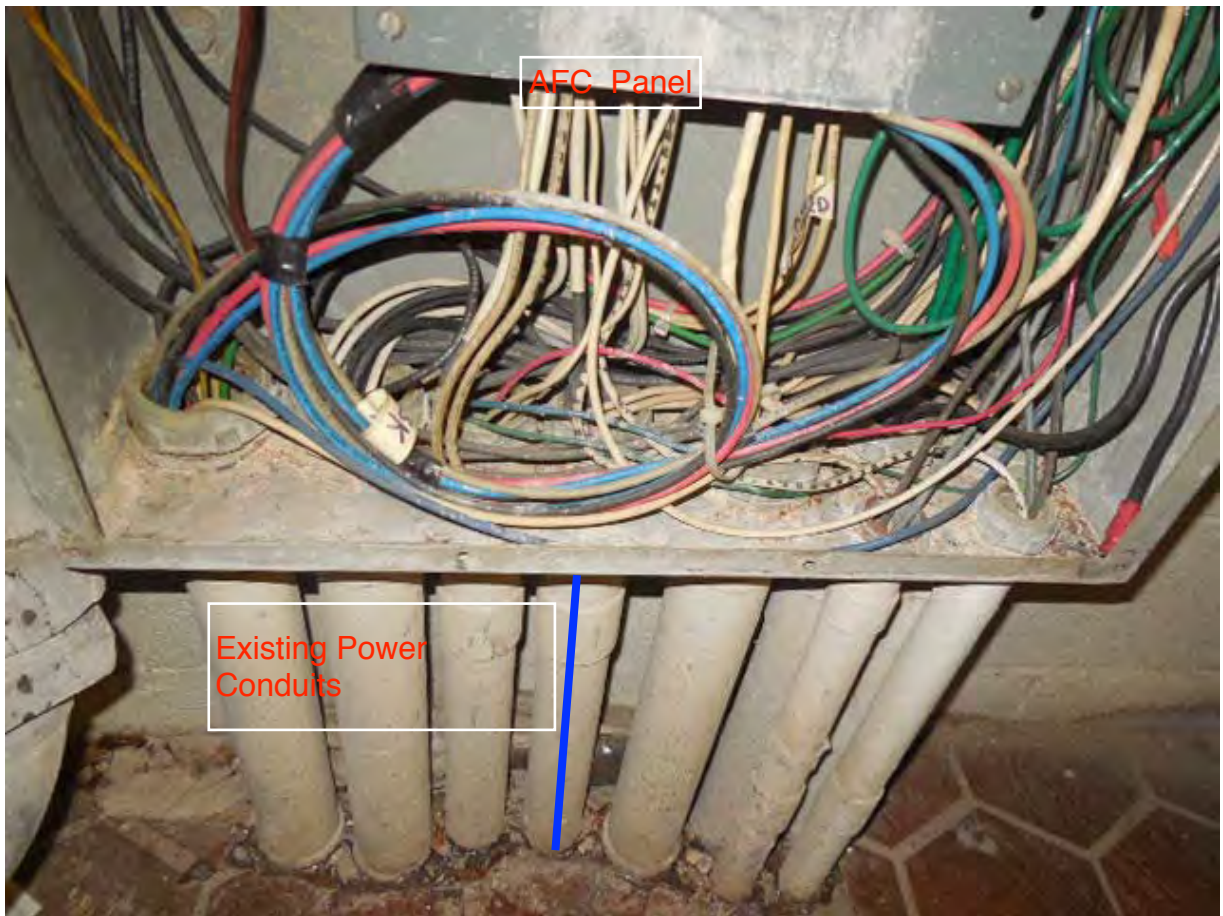
Scoping of Power Duct - Kiosk to AFC Panel		
Task	Yes/No	Notes
<b>Kiosk to AFC Panel (Distance: 130')</b>		
Was video scoping completed for the entire duct / conduit run?	No	Scoping of conduit not required.
Was pull string installed?	Yes	
Were there any obstructions or blockages? Provide details of type and specific location.	No	
Is the duct / conduit at capacity? Provide additional details about the dimensions of duct / conduit and number of wires.	No	2" rigid conduit with less than 8 wires.
<b>Observations / Issues / Next Steps</b>		
<ul style="list-style-type: none"> <li>- Total distance of power conduit between Kiosk and AFC Panel is 130'.</li> <li>- Refer to attached photos and drawings for detailed layout.</li> </ul>		
<b>Sign Off</b>		
	<b>GFP Representative</b>	<b>WMATA PRGM</b>
<b>Name:</b>	Mike Butler	
<b>Signature:</b>		
<b>Date:</b>	03/05/15	

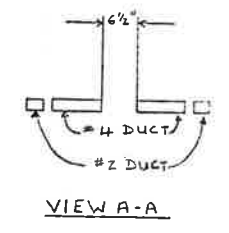
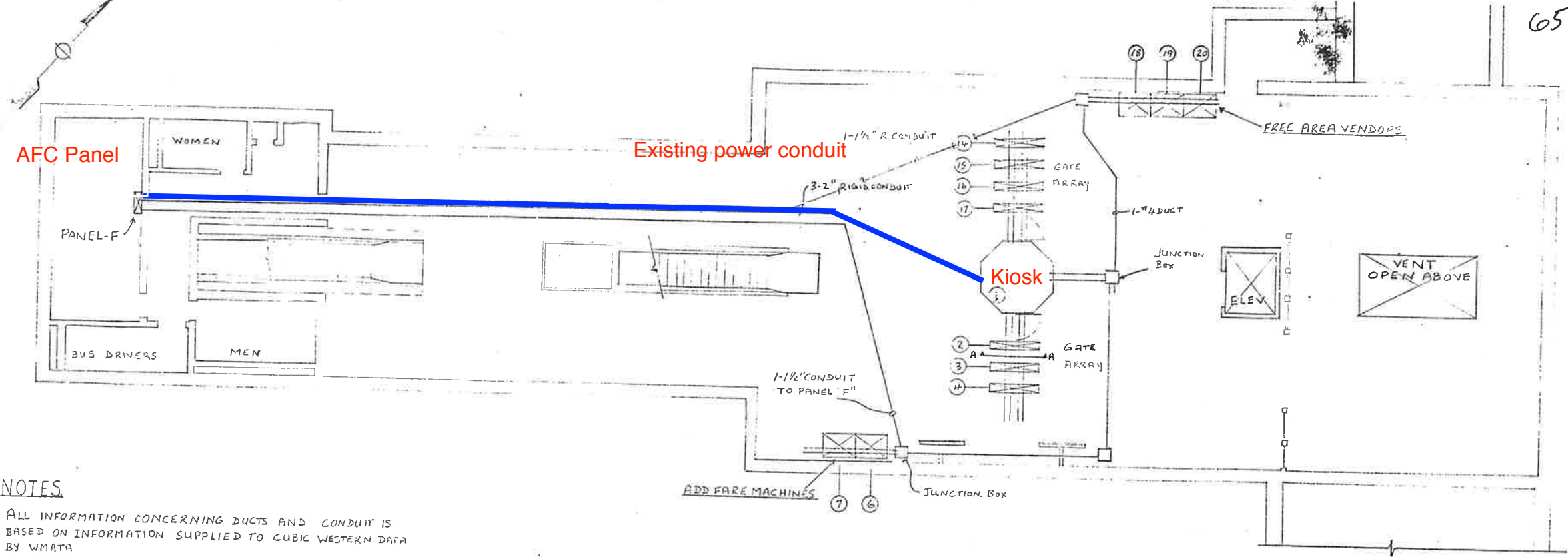
Photo #1 – Existing power conduit on mezzanine floor.



Photo #2 – Existing power conduit feeds to AFC Panel.



REVISIONS		
DESCRIPTION	DATE	APVD.



- NOTES**
- ALL INFORMATION CONCERNING DUCTS AND CONDUIT IS BASED ON INFORMATION SUPPLIED TO CUBIC WESTERN DATA BY WMATA
  - TOTAL MACHINE INVENTORY IS DEPICTED ON THIS DRAWING
  - THE MINIMUM OPERATIONAL MACHINE INVENTORY IS REFERENCED ON THIS DRAWING BY THE X DRAWN THRU THE MACHINE
  - FOR AS BUILT CONDITIONS SEE SHEET 2.
  - FOR REFERENCE DRAWINGS USED SEE SUPPORT DOCUMENTATION 166 FOR THIS MEZZANINE.

-2 INSTALLATION PLAN

CONTRACT NUMBER 22007A		<b>CUBIC WESTERN DATA</b> <small>A subsidiary of Cubic Corporation          5850 KEARNY MESA ROAD • POST OFFICE BOX 80787 • SAN DIEGO, CA 92138</small>	
REL		DEANWOOD STATION	
ENGRG		AFC MACHINES	
DESIGN			
CHECK			
DRAWN			
DESIGN ACTIVITY APPROVAL	SIZE	DRAWING NUMBER	REV
<i>Michael Powell</i> 10-26-97		926-0405	65
APPROVED			



## Mezzanine Inspection Report

**Date:** 02/19/15

**Station Name:** D11 Cheverly

**Mezzanine #:** 066

**Completed By:** Mike Butler

### Summary

100% completion of video scoping and pull string installation. Completed works includes:

- Video scoping and pull string installation completed for Upper and Lower Faregate communication ducts; respective power duct were also video scoped.
- Video scoping and pull string installation completed in power duct between Kiosk, Handhole 1, Handhole 2 and AFC Panel.

Refer to drawings and photos for detailed layout.

### Scoping of Faregate Array(s)

Task	Yes/No	Notes
<b>Communications Duct – Upper Faregate Array (3 gates)</b>		
Was video scoping completed for the entire duct run?	Yes	Refer to "WMATA Cheverly Station Upper Comm 6 inch duct.avi"
Were pull strings installed at all faregates in the array?	Yes	
Were there any obstructions or blockages? Provide details of type and specific location.	No	
Is the duct at capacity? Provide additional details about the dimensions of ducts and number of wires.	No	6" walker duct with less than 10 wires.
<b>Communications Duct - Lower Faregate Array (3 gates)</b>		
Was video scoping completed for the entire duct run?	Yes	Refer to "WMATA Cheverly Station Lower Comm 3 inch duct.avi"
Were pull strings installed at all faregates in the array?	Yes	
Were there any obstructions or blockages? Provide details of type and specific location.	No	
Is the duct at capacity? Provide additional details about the dimensions of ducts and number of wires.	No	3" walker duct with less than 10 wires.
<b>Power Duct - Upper Faregate Array (3 gates)</b>		
Was video scoping completed for the entire duct run?	Yes	Refer to "WMATA Cheverly Station Upper Power 6 inch duct.avi"
Were there any obstructions or blockages? Provide details of type and specific location.	No	
Is the duct at capacity? Provide additional details about the dimensions of ducts and number of wires.	No	6" walker duct with less than 10 wires.
<b>Power Duct - Lower Faregate Array (3 gates)</b>		
Was video scoping completed for the entire duct run?	Yes	Refer to "WMATA Cheverly Station Lower Power 6 inch duct.avi"
Were there any obstructions or blockages? Provide details of type and specific location.	No	
Is the duct at capacity? Provide additional details about the dimensions of ducts and number of wires.	No	6" walker duct with less than 10 wires.


Scoping of Power Duct - Kiosk to AFC Panel		
Task	Yes/No	Notes
<b>Kiosk to Handhole 1 (Distance: 48')</b>		
Was video scoping completed for the entire duct / conduit run?	Yes	Refer to "WMATA Cheverly 6inch Power HH1 to Kiosk.avi"
Was pull string installed?	Yes	
Were there any obstructions or blockages? Provide details of type and specific location.	No	
Is the duct / conduit at capacity? Provide additional details about the dimensions of duct / conduit and number of wires.	No	6" walker duct with less than 12 wires.
<b>Handhole 1 to Handhole 2 (Distance: 90')</b>		
Was video scoping completed for the entire duct / conduit run?	Yes	Refer to "WMATA Cheverly 6inch Power HH1 to HH2.avi"
Was pull string installed?	Yes	
Were there any obstructions or blockages? Provide details of type and specific location.	No	
Is the duct / conduit at capacity? Provide additional details about the dimensions of duct / conduit and number of wires.	No	6" walker duct with less than 12 wires.
<b>Handhole 2 to Shared Trough (Distance: 15')</b>		
Was video scoping completed for the entire duct / conduit run?	Yes	Refer to "WMATA Cheverly Station Power HH2 to AFC Panel.avi"
Was pull string installed?	Yes	
Were there any obstructions or blockages? Provide details of type and specific location.	No	
Is the duct / conduit at capacity? Provide additional details about the dimensions of duct / conduit and number of wires.	No	6" walker duct with less than 12 wires.
<b>Shared Trough to AFC Panel (Distance: 1')</b>		
Was video scoping completed for the entire duct / conduit run?	No	Video scoping of conduits not required.
Was pull string installed?	Yes	
Were there any obstructions or blockages? Provide details of type and specific location.	No	
Is the duct / conduit at capacity? Provide additional details about the dimensions of duct / conduit and number of wires.	No	2" conduit with less than 8 wires.
<b>Observations / Issues / Next Steps</b>		
<ul style="list-style-type: none"> <li>- The total distance of existing power duct / conduit between the Kiosk and AFC Panel is 154'.</li> <li>- Scanning was completed at this mezzanine.</li> </ul>		
<b>Sign Off</b>		
	<b>GFP Representative</b>	<b>WMATA PRGM</b>
<b>Name:</b>	Mike Butler	
<b>Signature:</b>		
<b>Date:</b>	03/16/15	

Photo 1 – Mezzanine layout showing existing duct route.

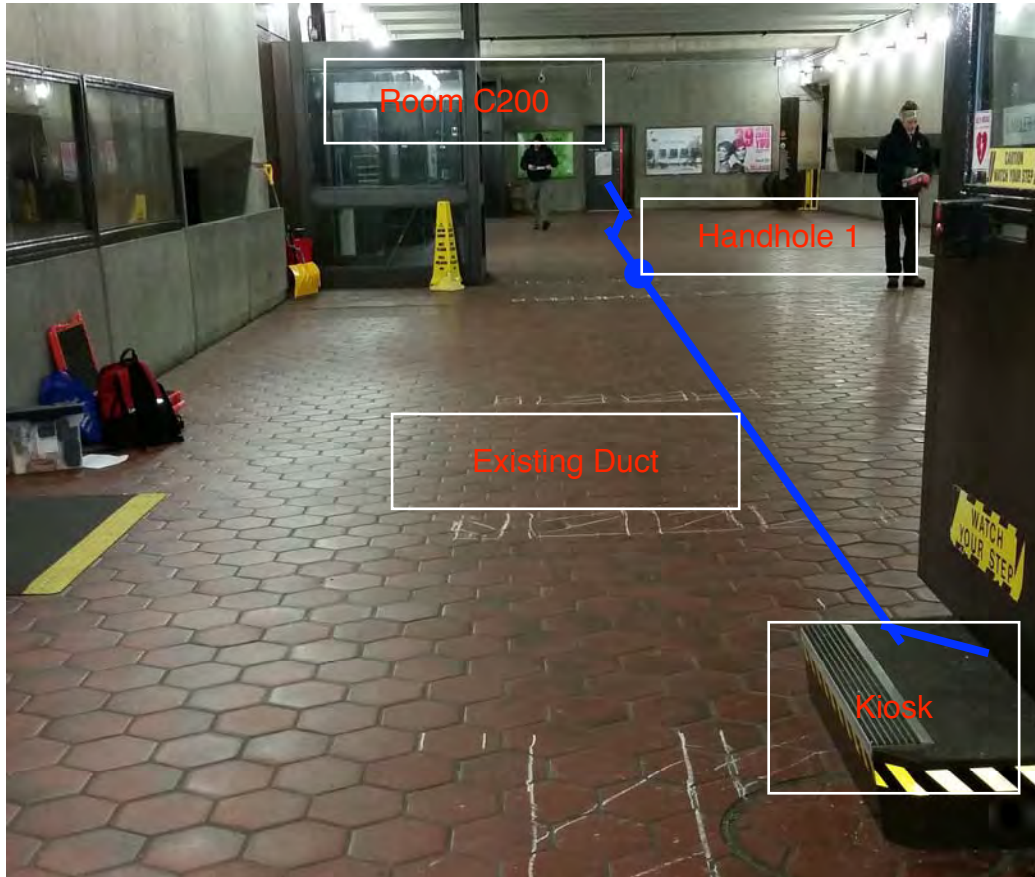


Photo 2 – Close-up of Handhole 1 on mezzanine floor.

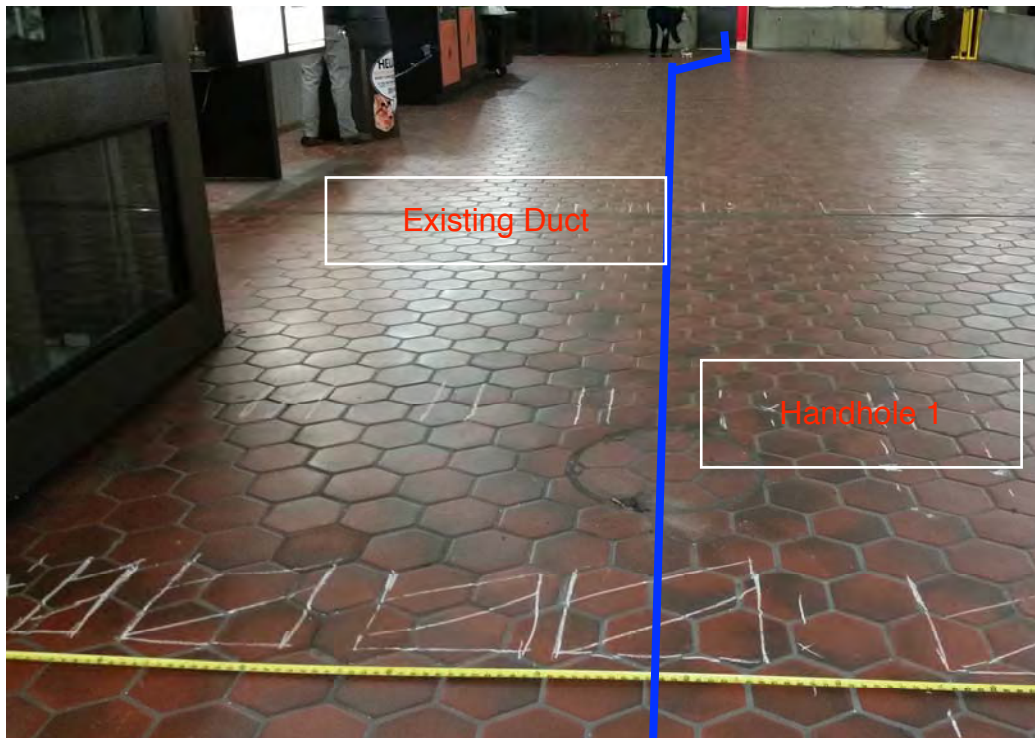
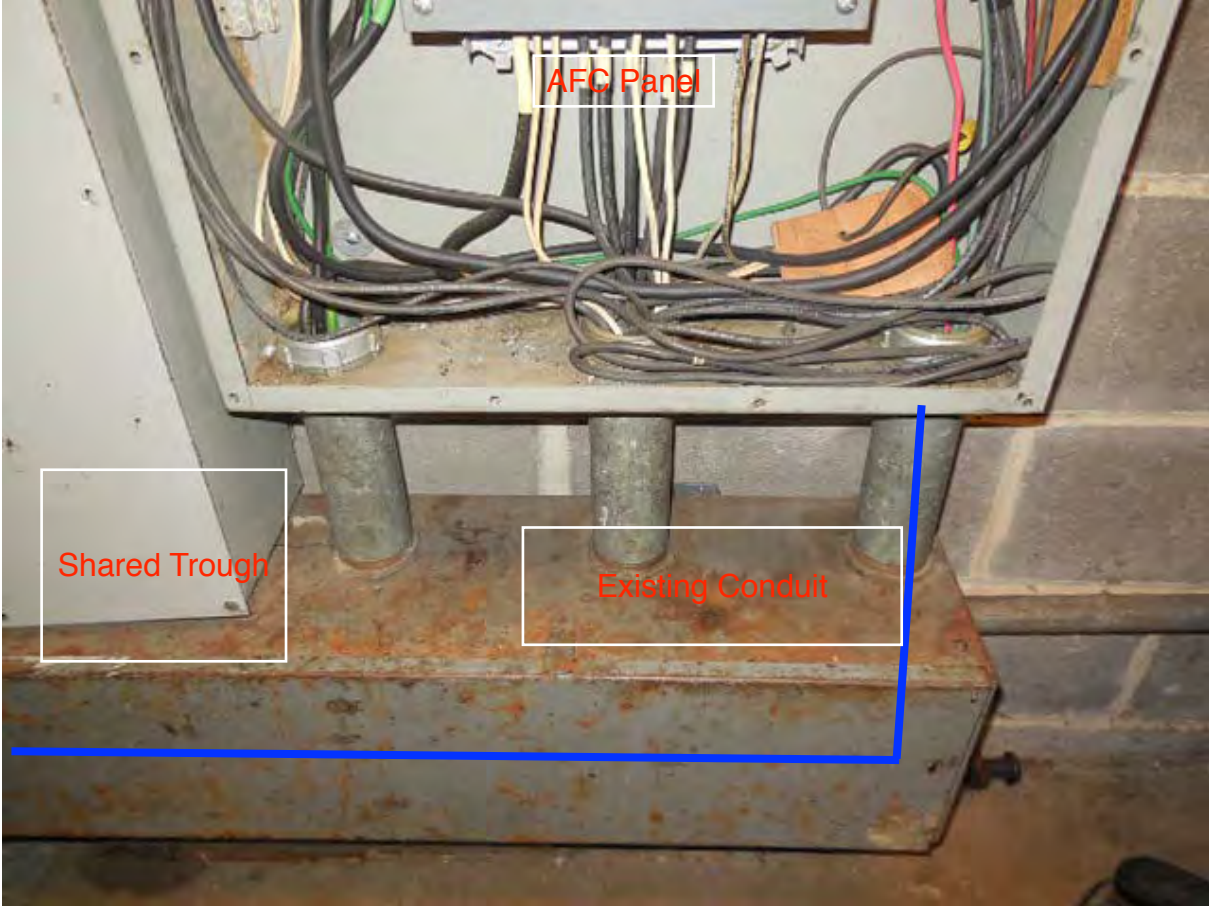




Photo 3 – Handhole 2 in Room C200.



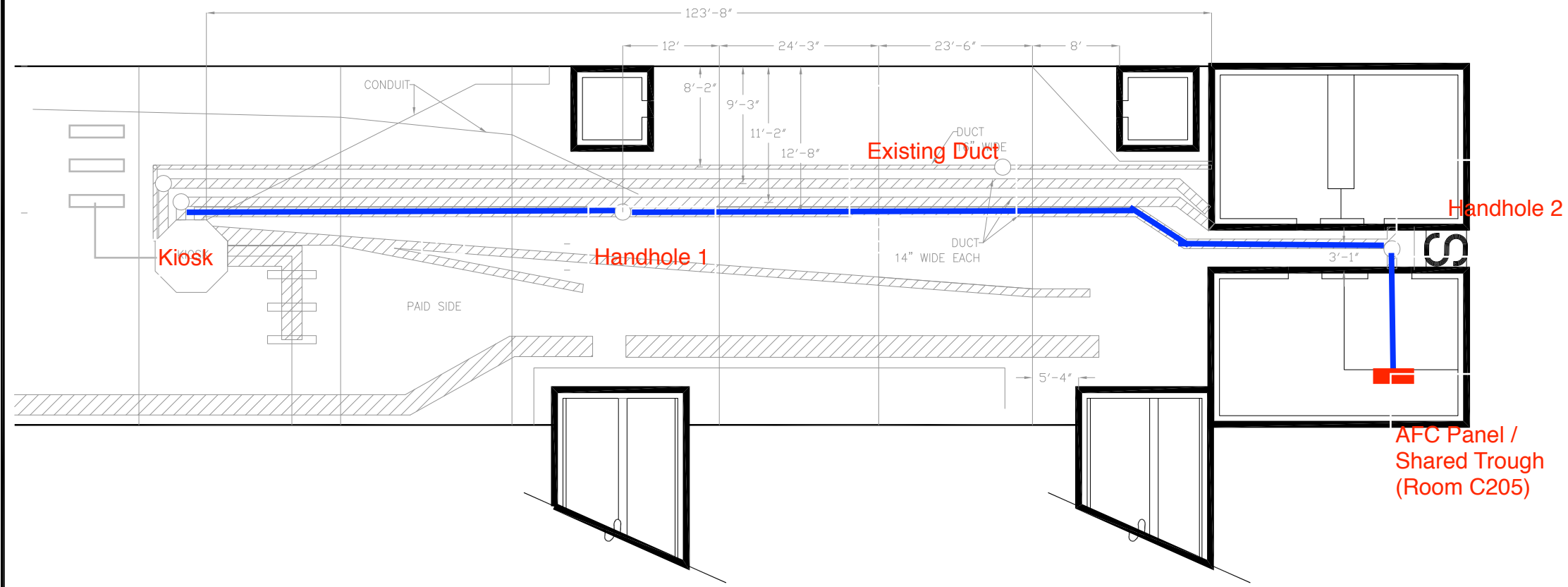
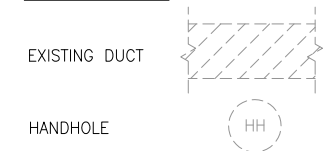
Photo 4 – AFC Panel and shared trough in Room C205.



**PLAN NOTES:**

1. DIMENSIONS ARE IN FEET AND INCHES.
2. DIMENSIONS ARE FOR REFERENCE ONLY.
3. EXISTING IN-FLOOR DUCTS/CONDUITS WERE IDENTIFIED USING A PORTABLE GPR SCANNING DEVICE.
4. THE SCANNING COVERAGE IS LIMITED TO THE MEZZANINE FLOOR ONLY.
5. GPR SCANNING HAS THE FOLLOWING LIMITATIONS: (i) 12 INCHES VISIBLE SCANNING DEPTH; (ii) VISIBILITY BEYOND CONGESTED OR NEAR SURFACE REINFORCEMENT LAYERS; (iii) DETECTION OF PVC AND OTHER NON-METALLIC OBJECTS (iv) DETERMINATION OF SIZE AND EXTENTS OF SUBSURFACE ANOMALIES SUCH AS SLAB VOIDS OR REBAR SIZES; AND (v) VISIBILITY WHEN VARIABLE MOISTURE CONDITIONS EXIST IN THE SUBSTRATE.

**LEGEND:**



**CHEVERLY STATION**  
SCALE: NOT TO SCALE

CONTRACT NO.  
**XXXXXX**

DESIGNED	C. LOOSE	03-15	REFERENCE DRAWINGS		REVISIONS	
			NUMBER	DESCRIPTION	DATE	BY
DRAWN	C. LOOSE	03-15				
CHECKED	M. BUTLER	03-15				
APPROVED						

**WASHINGTON METROPOLITAN AREA TRANSIT AUTHORITY**  
DEPARTMENT OF TRANSIT INFRASTRUCTURE AND ENGINEERING SERVICES  
OFFICE OF INFRASTRUCTURE RENEWAL PROGRAM

**GFP** A Gannett Fleming/Parsons JOINT VENTURE

APPROVED \_\_\_\_\_ SUBMITTED \_\_\_\_\_  
PROJECT MANAGER

**15-NEPP-01**  
**IN - FLOOR DUCT INSPECTIONS**  
D11 Cheverly  
EXISTING DUCT LAYOUT

SCALE: NOT TO SCALE

DRAWING NO.  
D11-E-100

XXX